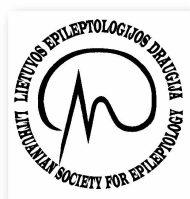




ILAE - CEA



Improve your level in epileptology by studying in a setting of young international peers with a group of dedicated and experienced tutors!

**12th Baltic Sea Summer School on Epilepsy (BSSSE 12)
Vilnius, Lithuania, June 24-29, 2018**

Organizing Committee: Peter Wolf (Denmark), Rūta Mameniškienė (Lithuania).

Preliminary programme:

Introductory courses: EEG in epilepsy (children, adults); imaging in epilepsy, pharmacology, seizure semiology.

Tutorials: Pharmacokinetic variability in special patient groups; Intractability – impact of new AEDs;; Interactions with AEDs; Women and epilepsy; Genetic epilepsies; Invasive EEG recordings; Reading EEGs; Treatment of psychiatric comorbidities; Non-epileptic paroxysmal conditions; Cognitive evaluation; Treatment of epileptic encephalopathies; Alcohol, drugs and epilepsy; Epilepsy in the elderly; Precipitation and inhibition of seizures.

Lectures: Pathogenetic mechanisms in epilepsy, Adverse effects of AEDs and adherence in epilepsy patients, Efficacy and tolerability of older and newer AEDs, Genetic epilepsies, Status epilepticus, SUDEP, Psychiatric comorbidities in epilepsy patients, Cognitive evaluation; Alcohol, drugs and epilepsy.

Study methods: lectures, tutorials, case-oriented study, interactive group work with video, journal club. Participants are requested to bring own cases and encouraged to present own research for peer discussion.

The annual **Baltic Sea Summer Schools on Epilepsy (BSSSE)** are clinically oriented and focused on comprehensive aspects of diagnosis and treatment of epilepsy and provide a platform for transnational research. The open and informal atmosphere of the BSSSE allows easy communication between faculty and up to 40 international students.

Reference: Find reports on earlier BSSSE with evaluations on www.epilepsiestiftung-wolf.de.

Target audience: The BSSSE are primarily addressed to medical postgraduates and junior researchers (age usually up to 40 years) with a special clinical or scientific interest in epilepsy. Applicants from the Baltic Sea region are given priority but participants from all parts of the world are accepted.

Registration fee: 800 Euro. A substantial number of bursaries will be available from several sources, including the ILAE-CEA.

Important information, dates and addresses for BSSSE 12

Time and place: June 24-29, 2018, Vilnius, Lithuania.

Deadline for applications: February 15, 2018. Priority deadline for students from countries around the Baltic Sea: January 20, 2018.

For information please contact:

Petra Novotny, BSSSE office: petra.novotny@wolfstiftung.org

Rūta Mameniškienė, Co-director: ruta.mameniskiene@gmail.com

More information coming up soon on www.epilepsiestiftung-wolf.de